

(Low Temperature Chemical Slurry Type)

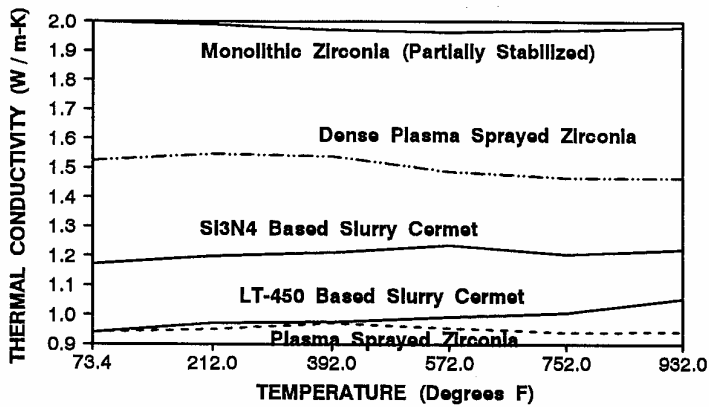
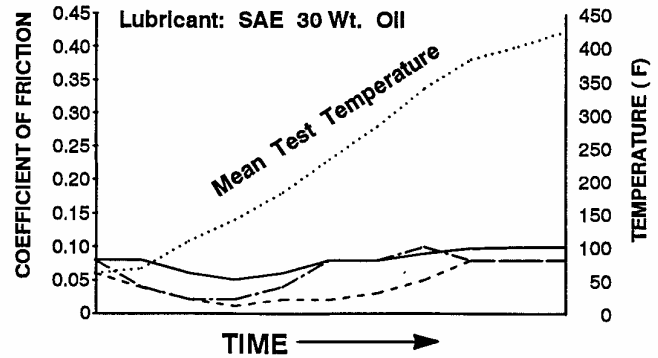
COATING THICKNESS ----- 0.002 inches to 0.020 inches.

BOND STRENGTH ----- Greater than Thermal Sprayed coatings, as coating is chemically bounded to substrate.

DYNAMIC FRICTION

Determined From Laboratory Friction and Wear Test Rig

- STEEL RING:** -----
No Measurable Wear on Coating
- CAST IRON RING:** -----
No Measurable Wear on Coating
- Cr2O3 COATED RING:** -----
0.006 grams per Hour



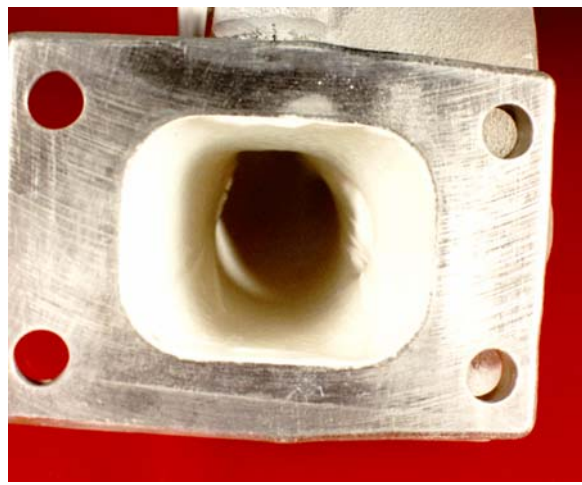
THERMAL CONDUCTIVITY LASER FLASH METHOD

Thermal Conductivity Proves to be Lower Than Monolithic Ceramic Materials.

Thermal Conductivity is Within the Range of Thermal Sprayed Coatings Relying Heavily Upon Large Quantities of Open Porosity to Provide Insulation.

Applications:

Applications include Inside Diameters, Outside Diameters, for a Wide Range of Substrates Such as: Aluminum Alloys, Copper, Brass, Titanium, Steels, Cast Iron, Stainless and Others.



LT-450 Thermal Barrier Coating on Inside of Stainless Steel Turbocharger Scroll, Wastegate, and Throat Areas. Allows Coatings in Areas Where Other Coatings Cannot be Applied.